



**PRINCE SHRI VENKATESWARA ARTS AND SCIENCE COLLEGE**

Gowrivakkam, Chennai-600073.

Affiliated to University of Madras

**ALUMNI FEEDBACK ON CURRICULUM, INFRASTRUCTURE FACILITIES & AMBIENCE OF THE INSTITUTION – ANALYSIS REPORT**

**Academic Year**

**2018-2019**

**Department**

**B.Sc. Biochemistry**

**Number of Respondents**

**40**

Feedback Rate: Strongly Agree (5), Agree (4), Neutral (3), Disagree (2), Strongly Disagree (1)

S. No	Feedback on Curriculum, infrastructure facilities & ambience of the institution	5	4	3	2	1
1	Rate the appropriateness of curriculum and syllabus content for placement/ higher education. (Related to curriculum)	32	6	2	0	0
2	Rate the effectiveness of the academic curriculum for the development of analytical and problem-solving skills (Related to curriculum)	37	2	1	0	0
3	Rate the curriculum and institution activities for making the students industry ready at the end of the programme (Related to curriculum)	28	11	1	0	0
4	Rate the curriculum for the improvement of creative thinking skills and knowledge / scope of the syllabus in enhancing entrepreneurship skills/ lifelong learning/ human values and ethics. (Related to Academic Performance)	32	3	5	0	0
5	Rate the faculty and the teaching learning process in the department and institution (Related to curriculum and academic performance)	31	6	3	0	0



## PRINCE SHRI VENKATESWARA ARTS AND SCIENCE COLLEGE

Gowrivakkam, Chennai-600073.

Affiliated to University of Madras

6	Rate the placement opportunities and career guidance programs provided by the Placement Cell (Related to academic performance)	29	7	3	0	1
7	Rate the laboratory facilities and the laboratory course experiments relevancy to real time applications (Related to infrastructure and ambience of the institution)	32	6	2	0	0
8	Rate the adequacy of library and research Centre facilities (Related to infrastructure of the institution)	37	2	1	0	0
9	Rate the sports and cultural facilities and the related activities by the institution (Related to infrastructure and ambience of the institution)	32	2	6	0	0
10	Rate the opportunities provided by the institute to participate in co-curricular and extracurricular activities (Related to ambience of the institution)	36	3	0	1	0
11	Rate the conducive and peaceful overall environment provided by the institution (Related to ambience of the institution)	34	4	2	0	0

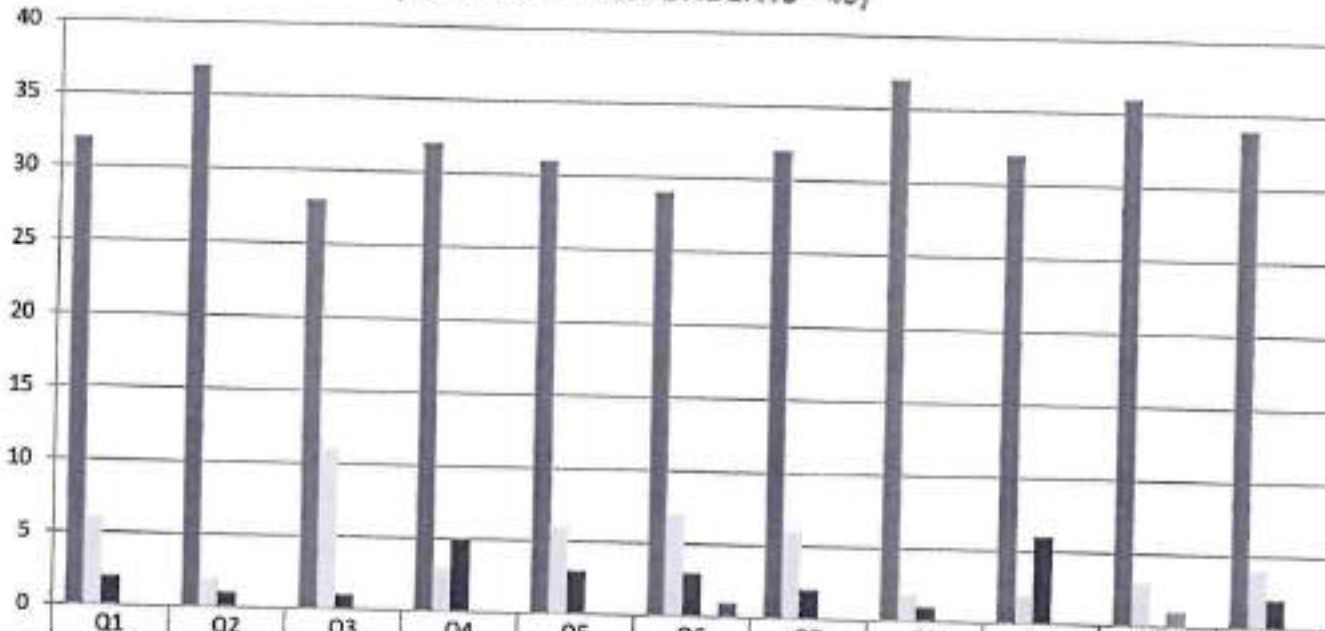


*B. Kalpene*  
**PRINCIPAL**  
PRINCE SHRI VENKATESHWARA  
ARTS AND SCIENCE COLLEGE  
GOWRIVAKKAM, CHENNAI-600 073.



**PRINCE SHRI VENKATESWARA ARTS AND SCIENCE COLLEGE**  
 Gowrivaikam, Chennai-600073.  
 Affiliated to University of Madras

**ALUMNI FEEDBACK ON CURRICULUM, INFRASTRUCTURE  
 FACILITIES & AMBIENCE OF THE INSTITUTION - 2018-2019**  
**B.Sc. BIOCHEMISTRY**  
 (NUMBER OF RESPONDENTS - 40)



	Q1	Q2	Q3	Q4	Q5	Q6	Q7	Q8	Q9	Q10	Q11
Strongly Agree (5)	32	37	28	32	31	29	32	37	32	36	34
Agree (4)	6	2	11	3	6	7	6	2	2	3	4
Neutral (3)	2	1	1	5	3	3	2	1	6	0	2
Disagree (2)	0	0	0	0	0	0	0	0	0	1	0
Strongly Disagree (1)	0	0	0	0	0	1	0	0	0	0	0



*B. Kalpana*  
**PRINCIPAL**  
 PRINCE SHRI VENKATESHWARA  
 ARTS AND SCIENCE COLLEGE  
 CHENNAI-600 073.







**PRINCE SHRI VENKATESWARA ARTS AND SCIENCE COLLEGE**

Gowrivakkam, Chennai-600073.

Affiliated to University of Madras

7	Rate the laboratory facilities and the laboratory course experiments relevancy to real time applications (Related to infrastructure and ambience of the institution)	35	15	3	0	0
8	Rate the adequacy of library and research Centre facilities (Related to infrastructure of the institution)	39	11	2	1	0
9	Rate the sports and cultural facilities and the related activities by the institution (Related to infrastructure and ambience of the institution)	37	14	2	0	0
10	Rate the opportunities provided by the institute to participate in co-curricular and extracurricular activities (Related to ambience of the institution)	38	13	2	0	0
11	Rate the conducive and peaceful overall environment provided by the institution (Related to ambience of the institution)	40	10	3	0	0

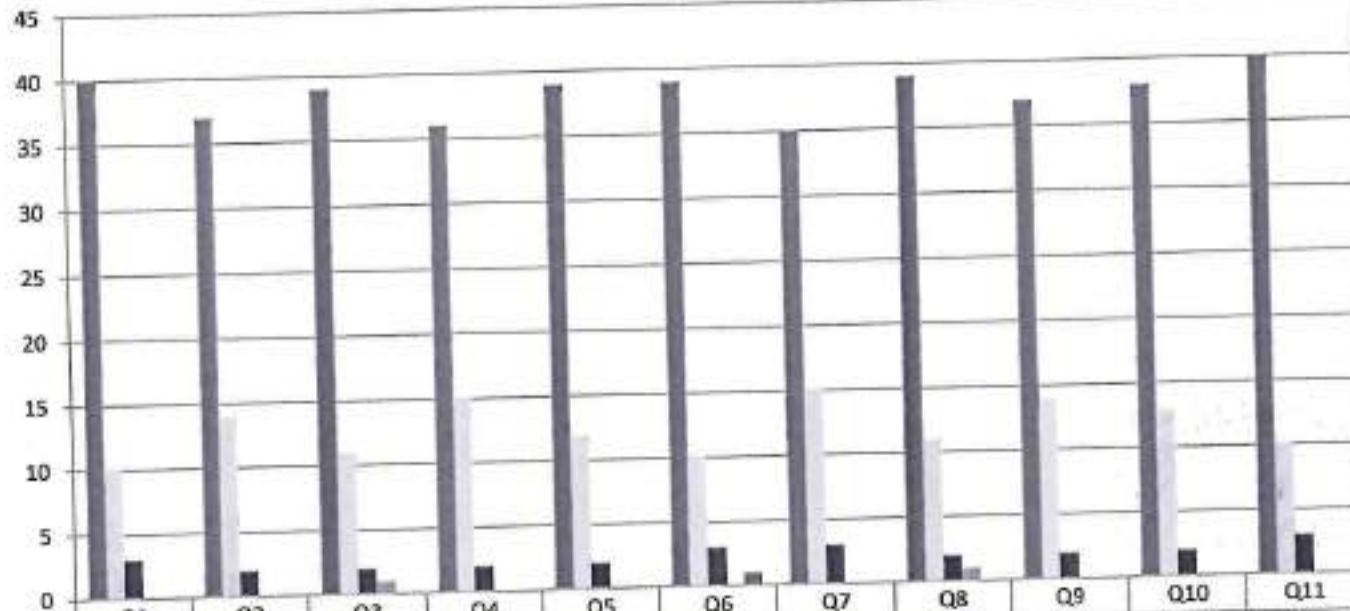


*B. Kalpana*  
**PRINCIPAL**  
PRINCE SHRI VENKATESHWARA  
ARTS AND SCIENCE COLLEGE  
GOWRIVAKKAM, CHENNAI-600 073.



**PRINCE SHRI VENKATESWARA ARTS AND SCIENCE COLLEGE**  
 Gowrivakkam, Chennai-600073.  
 Affiliated to University of Madras

**ALUMNI FEEDBACK ON CURRICULUM, INFRASTRUCTURE  
 FACILITIES & AMBIENCE OF THE INSTITUTION - 2018-2019**  
**B.Sc. MICROBIOLOGY**  
 (NUMBER OF RESPONDENTS - 53)



Strongly Agree (5)  
 Agree (4)  
 Neutral (3)  
 Disagree (2)  
 Strongly Disagree (1)



*B. Jeyapane*  
**PRINCIPAL**  
 PRINCE SHRI VENKATESHWARA  
 ARTS AND SCIENCE COLLEGE  
 GOWRIVAKKAM, CHENNAI-600 073.





**PRINCE SHRI VENKATESWARA ARTS AND SCIENCE COLLEGE**

Gowrivaikam, Chennai-600073.

Affiliated to University of Madras

**ALUMNI FEEDBACK ON CURRICULUM, INFRASTRUCTURE FACILITIES & AMBIENCE OF THE INSTITUTION – ANALYSIS REPORT**

**Academic Year**

**2018-2019**

**Department**

**B.Sc. Electronics and Communication Science**

**Number of Respondents**

**11**

Feedback Rate: Strongly Agree (5), Agree (4), Neutral (3), Disagree (2), Strongly Disagree (1)

S. No	Feedback on Curriculum, infrastructure facilities & ambience of the institution	5	4	3	2	1
1	Rate the appropriateness of curriculum and syllabus content for placement/ higher education. (Related to curriculum)	8	2	1	0	0
2	Rate the effectiveness of the academic curriculum for the development of analytical and problem-solving skills (Related to curriculum)	6	3	2	0	0
3	Rate the curriculum and institution activities for making the students industry ready at the end of the programme (Related to curriculum)	7	1	2	1	0
4	Rate the curriculum for the improvement of creative thinking skills and knowledge / scope of the syllabus in enhancing entrepreneurship skills/ lifelong learning/ human values and ethics. (Related to Academic Performance)	6	4	1	0	0
5	Rate the faculty and the teaching learning process in the department and institution (Related to curriculum and academic performance)	8	2	1	0	0



## PRINCE SHRI VENKATESWARA ARTS AND SCIENCE COLLEGE

Gowrivakkam, Chennai-600073.

Affiliated to University of Madras

6	Rate the placement opportunities and career guidance programs provided by the Placement Cell (Related to academic performance)	8	1	1	0	1
7	Rate the laboratory facilities and the laboratory course experiments relevancy to real time applications (Related to infrastructure and ambience of the institution)	7	3	1	0	0
8	Rate the adequacy of library and research Centre facilities (Related to infrastructure of the institution)	8	2	0	1	0
9	Rate the sports and cultural facilities and the related activities by the institution (Related to infrastructure and ambience of the institution)	8	3	0	0	0
10	Rate the opportunities provided by the institute to participate in co-curricular and extracurricular activities (Related to ambience of the institution)	7	3	1	0	0
11	Rate the conducive and peaceful overall environment provided by the institution (Related to ambience of the institution)	8	2	1	0	0



*B. Kalpana*  
**PRINCIPAL**  
PRINCE SHRI VENKATESHWARA  
ARTS AND SCIENCE COLLEGE  
GOWRIVAKKAM, CHENNAI-600 073.





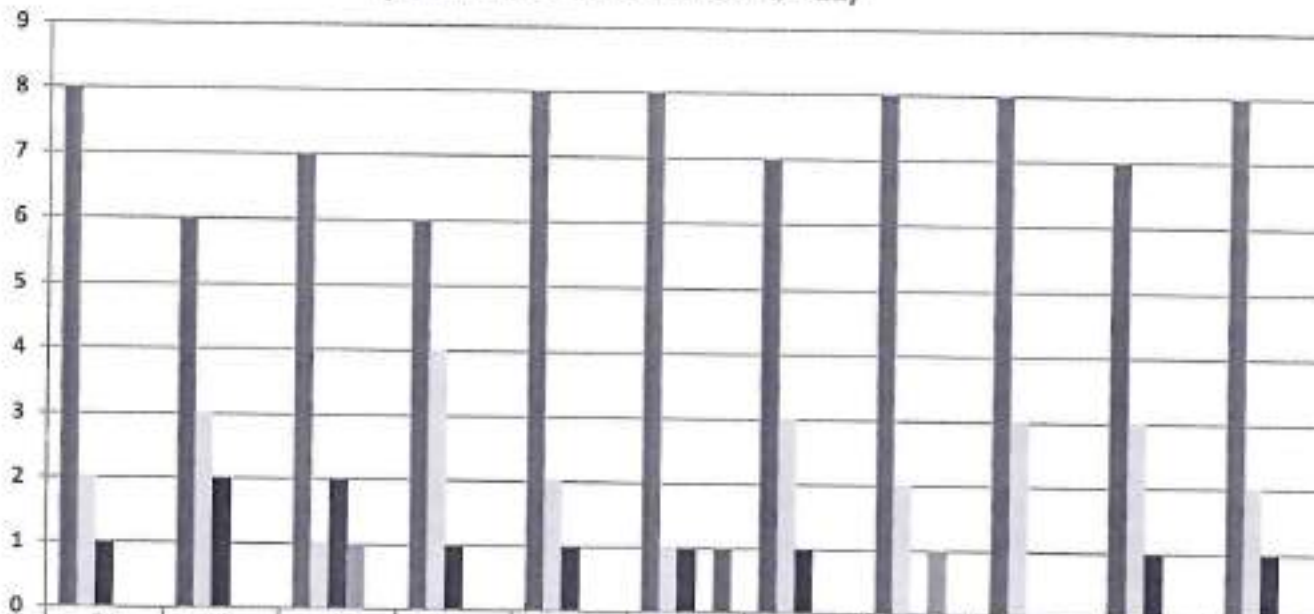
**PRINCE SHRI VENKATESWARA ARTS AND SCIENCE COLLEGE**

Gowrivakkam, Chennai-600073.

Affiliated to University of Madras

**ALUMNI FEEDBACK ON CURRICULUM, INFRASTRUCTURE  
FACILITIES & AMBIENCE OF THE INSTITUTION - 2018-2019  
B.Sc. ELECTRONICS AND COMMUNICATION SCIENCE**

(NUMBER OF RESPONDENTS - 11)



	Q1	Q2	Q3	Q4	Q5	Q6	Q7	Q8	Q9	Q10	Q11
Strongly Agree (5)	8	6	7	6	8	8	7	8	8	7	8
Agree (4)	2	3	1	4	2	1	3	2	3	3	2
Neutral (3)	1	2	2	1	1	1	1	0	0	1	1
Disagree (2)	0	0	1	0	0	0	0	1	0	0	0
Strongly Disagree (1)	0	0	0	0	0	1	0	0	0	0	0



*B. Kalpana*  
**PRINCIPAL**  
PRINCE SHRI VENKATESHWARA  
ARTS AND SCIENCE COLLEGE  
GOWRIVAKKAM



**PRINCE SHRI VENKATESWARA ARTS AND SCIENCE COLLEGE**

Gowrivaikam, Chennai-600073

Affiliated to University of Madras

**ALUMNI FEEDBACK ON CURRICULUM, INFRASTRUCTURE FACILITIES & AMBIENCE OF THE INSTITUTION – ANALYSIS REPORT**

**Academic Year**

**2018-2019**

**Department**

**B.Sc.-Computer Science**

**Number of Respondents**

**112**

Feedback Rate: Strongly Agree (5), Agree (4), Neutral (3), Disagree (2), Strongly Disagree (1)

S. No	Feedback on Curriculum, infrastructure facilities & ambience of the institution	5	4	3	2	1
1	Rate the appropriateness of curriculum and syllabus content for placement/ higher education. (Related to curriculum)	82	24	6	0	0
2	Rate the effectiveness of the academic curriculum for the development of analytical and problem-solving skills (Related to curriculum)	72	35	5	0	0
3	Rate the curriculum and institution activities for making the students industry ready at the end of the programme (Related to curriculum)	76	27	9	0	0
4	Rate the curriculum for the improvement of creative thinking skills and knowledge / scope of the syllabus in enhancing entrepreneurship skills/ lifelong learning/ human values and ethics. (Related to Academic Performance)	76	30	6	0	0
5	Rate the faculty and the teaching learning process in the department and institution (Related to curriculum and academic performance)	75	30	7	0	0



**PRINCE SHRI VENKATESWARA ARTS AND SCIENCE COLLEGE**

Gowrivakkam, Chennai-600073.

Affiliated to University of Madras

6	Rate the placement opportunities and career guidance programs provided by the Placement Cell (Related to academic performance)	73	31	7	0	1
7	Rate the laboratory facilities and the laboratory course experiments relevancy to real time applications (Related to infrastructure and ambience of the institution)	76	30	6	0	0
8	Rate the adequacy of library and research Centre facilities (Related to infrastructure of the institution)	81	26	5	0	0
9	Rate the sports and cultural facilities and the related activities by the institution (Related to infrastructure and ambience of the institution)	75	27	10	0	0
10	Rate the opportunities provided by the institute to participate in co-curricular and extracurricular activities (Related to ambience of the institution)	82	24	5	1	0
11	Rate the conducive and peaceful overall environment provided by the institution (Related to ambience of the institution)	76	30	6	0	0



*B. Kalpana*

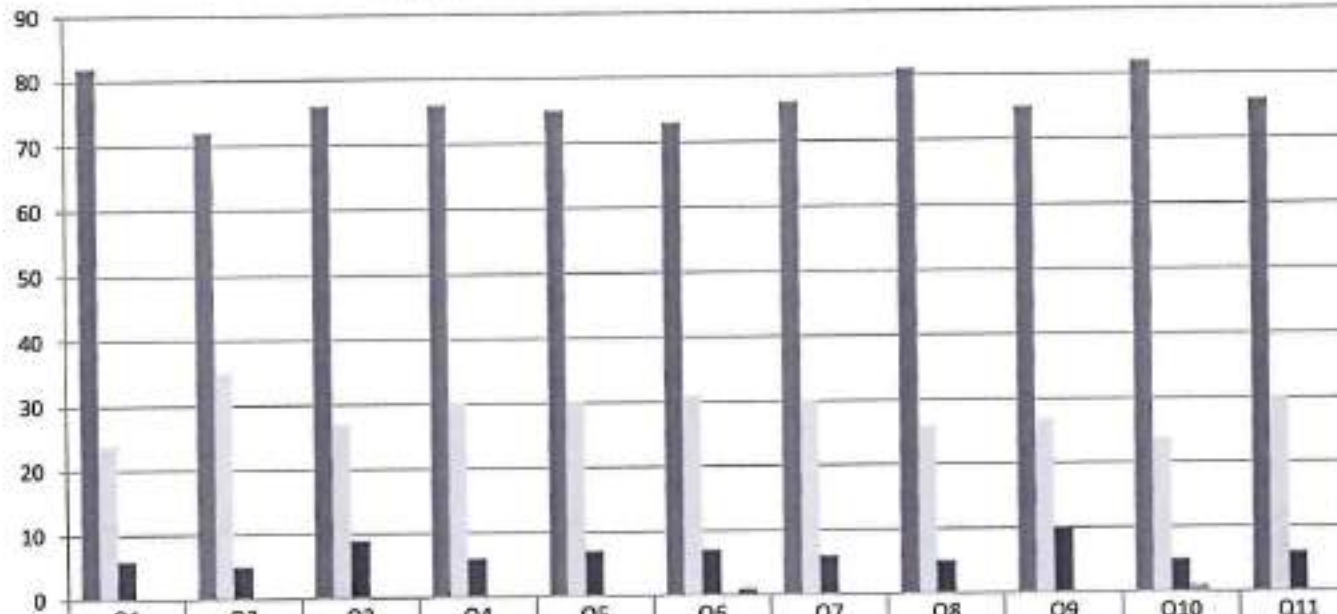
PRINCE SHRI VENKATESHWARA  
ARTS AND SCIENCE COLLEGE  
GOWRIVAKKAM, CHENNAI-600 073.





**PRINCE SHRI VENKATESWARA ARTS AND SCIENCE COLLEGE**  
 Gowrivaikam, Chennai-600073.  
 Affiliated to University of Madras

**ALUMNI FEEDBACK ON CURRICULUM, INFRASTRUCTURE  
 FACILITIES & AMBIENCE OF THE INSTITUTION - 2018-2019**  
**B.Sc. COMPUTER SCIENCE**  
 (NUMBER OF RESPONDENTS - 112)



	Q1	Q2	Q3	Q4	Q5	Q6	Q7	Q8	Q9	Q10	Q11
Strongly Agree (5)	82	72	76	76	75	73	76	81	75	82	76
Agree (4)	24	35	27	30	30	31	30	26	27	24	30
Neutral (3)	6	5	9	6	7	7	6	5	10	5	6
Disagree (2)	0	0	0	0	0	0	0	0	0	1	0
Strongly Disagree (1)	0	0	0	0	0	1	0	0	0	0	0



*B. Kalpana*  
**PRINCIPAL**  
 PRINCE SHRI VENKATESHWARA  
 ARTS AND SCIENCE COLLEGE  
 GOWRIVAKKAM, CHENNAI-600 073.



**PRINCE SHRI VENKATESWARA ARTS AND SCIENCE COLLEGE**

Gowrivaikam, Chennai-600073.

Affiliated to University of Madras

**ALUMNI FEEDBACK ON CURRICULUM, INFRASTRUCTURE FACILITIES & AMBIENCE OF THE INSTITUTION – ANALYSIS REPORT**

**Academic Year** 2018-2019

**Department** B. Com-General

**Number of Respondents** 106

Feedback Rate: Strongly Agree (5), Agree (4), Neutral (3), Disagree (2), Strongly Disagree (1)

S. No	Feedback on Curriculum, infrastructure facilities & ambience of the institution	5	4	3	2	1
1	Rate the appropriateness of curriculum and syllabus content for placement/ higher education. (Related to curriculum)	74	28	4	0	0
2	Rate the effectiveness of the academic curriculum for the development of analytical and problem-solving skills (Related to curriculum)	64	39	3	0	0
3	Rate the curriculum and institution activities for making the students industry ready at the end of the programme (Related to curriculum)	68	31	7	0	0
4	Rate the curriculum for the improvement of creative thinking skills and knowledge / scope of the syllabus in enhancing entrepreneurship skills/ lifelong learning/ human values and ethics. (Related to Academic Performance)	68	34	4	0	0
5	Rate the faculty and the teaching learning process in the department and institution (Related to curriculum and academic performance)	67	34	5	0	0



**PRINCE SHRI VENKATESWARA ARTS AND SCIENCE COLLEGE**

Gowrivaikam, Chennai-600073.

Affiliated to University of Madras

6	Rate the placement opportunities and career guidance programs provided by the Placement Cell (Related to academic performance)	65	35	5	0	1
7	Rate the laboratory facilities and the laboratory course experiments relevancy to real time applications (Related to infrastructure and ambience of the institution)	68	34	4	0	0
8	Rate the adequacy of library and research Centre facilities (Related to infrastructure of the institution)	73	30	3	0	0
9	Rate the sports and cultural facilities and the related activities by the institution (Related to infrastructure and ambience of the institution)	67	31	8	0	0
10	Rate the opportunities provided by the institute to participate in co-curricular and extracurricular activities (Related to ambience of the institution)	74	28	3	1	0
11	Rate the conducive and peaceful overall environment provided by the institution (Related to ambience of the institution)	68	34	4	0	0



*B. Kalpana*  
**PRINCIPAL**  
PRINCE SHRI VENKATESHWARA  
ARTS AND SCIENCE COLLEGE  
GOWRIVAKKAM, CHENNAI-600 073





**PRINCE SHRI VENKATESWARA ARTS AND SCIENCE COLLEGE**

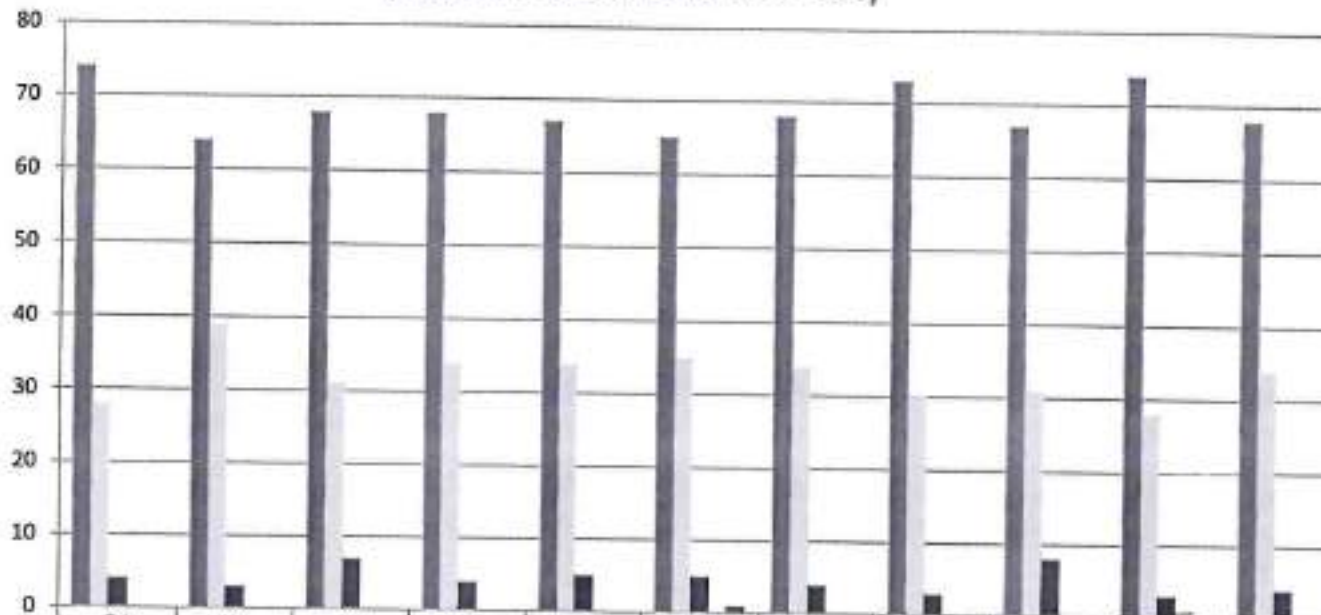
Gowrivaklam, Chennai-600073.

Affiliated to University of Madras

**ALUMNI FEEDBACK ON CURRICULUM, INFRASTRUCTURE  
FACILITIES & AMBIENCE OF THE INSTITUTION - 2018-2019**

**B.COM (GENERAL)**

(NUMBER OF RESPONDENTS - 106)



	Q1	Q2	Q3	Q4	Q5	Q6	Q7	Q8	Q9	Q10	Q11
Strongly Agree (5)	74	64	68	68	67	65	68	73	67	74	68
Agree (4)	28	39	31	34	34	35	34	30	31	28	34
Neutral (3)	4	3	7	4	5	5	4	3	8	3	4
Disagree (2)	0	0	0	0	0	0	0	0	0	1	0
Strongly Disagree (1)	0	0	0	0	0	1	0	0	0	0	0



*B. Kalpana*  
**PRINCIPAL**  
PRINCE SHRI VENKATESHWARA  
ARTS AND SCIENCE COLLEGE



**PRINCE SHRI VENKATESWARA ARTS AND SCIENCE COLLEGE**

Gowrivaldam, Chennai-600073.

Affiliated to University of Madras

**ALUMNI FEEDBACK ON CURRICULUM, INFRASTRUCTURE FACILITIES & AMBIENCE OF THE INSTITUTION – ANALYSIS REPORT**

**Academic Year** 2018-2019  
**Department** BCA  
**Number of Respondents** 128

Feedback Rate: Strongly Agree (5), Agree (4), Neutral (3), Disagree (2), Strongly Disagree (1)

S. No	Feedback on Curriculum, infrastructure facilities & ambience of the institution	5	4	3	2	1
1	Rate the appropriateness of curriculum and syllabus content for placement/ higher education. (Related to curriculum)	92	29	7	0	0
2	Rate the effectiveness of the academic curriculum for the development of analytical and problem-solving skills (Related to curriculum)	82	40	6	0	0
3	Rate the curriculum and institution activities for making the students industry ready at the end of the programme (Related to curriculum)	86	32	10	0	0
4	Rate the curriculum for the improvement of creative thinking skills and knowledge / scope of the syllabus in enhancing entrepreneurship skills/ lifelong learning/ human values and ethics. (Related to Academic Performance)	86	35	7	0	0
5	Rate the faculty and the teaching learning process in the department and institution (Related to curriculum and academic performance)	85	35	8	0	0



**PRINCE SHRI VENKATESWARA ARTS AND SCIENCE COLLEGE**

Gowrivaikam, Chennai-600073.

Affiliated to University of Madras

6	Rate the placement opportunities and career guidance programs provided by the Placement Cell (Related to academic performance)	83	36	8	0	1
7	Rate the laboratory facilities and the laboratory course experiments relevancy to real time applications (Related to infrastructure and ambience of the institution)	86	35	7	0	0
8	Rate the adequacy of library and research Centre facilities (Related to infrastructure of the institution)	91	31	6	0	0
9	Rate the sports and cultural facilities and the related activities by the institution (Related to infrastructure and ambience of the institution)	85	32	11	0	0
10	Rate the opportunities provided by the institute to participate in co-curricular and extracurricular activities (Related to ambience of the institution)	92	29	6	1	0
11	Rate the conducive and peaceful overall environment provided by the institution (Related to ambience of the institution)	86	35	7	0	0



*B. Kalpana*  
**PRINCIPAL**  
PRINCE SHRI VENKATESHWARA  
ARTS AND SCIENCE COLLEGE  
GOWRIVAKKAM, CHENNAI-600 073



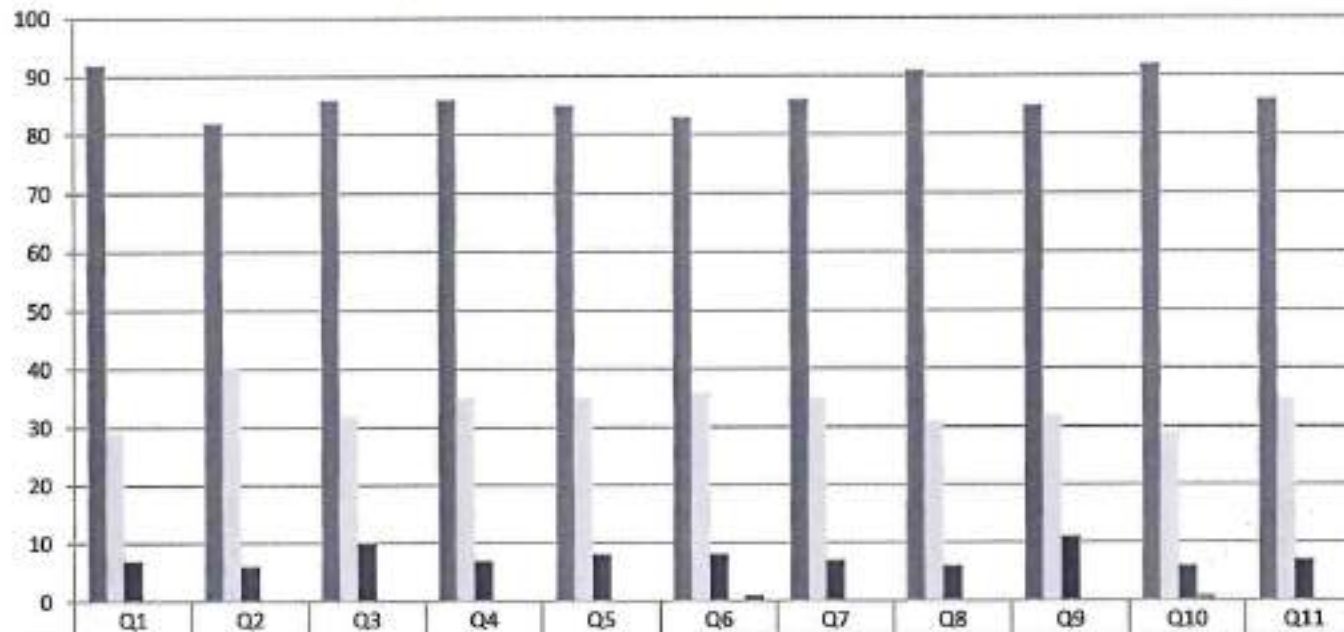


**PRINCE SHRI VENKATESWARA ARTS AND SCIENCE COLLEGE**  
 Gowrivakkam, Chennai-600073.  
 Affiliated to University of Madras

**ALUMNI FEEDBACK ON CURRICULUM, INFRASTRUCTURE  
 FACILITIES & AMBIENCE OF THE INSTITUTION - 2018-2019**

**BCA**

(NUMBER OF RESPONDENTS - 128)



	Q1	Q2	Q3	Q4	Q5	Q6	Q7	Q8	Q9	Q10	Q11
Strongly Agree (5)	92	82	86	86	85	83	86	91	85	92	86
Agree (4)	29	40	32	35	35	36	35	31	32	29	35
Neutral (3)	7	6	10	7	8	8	7	6	11	6	7
Disagree (2)	0	0	0	0	0	0	0	0	0	1	0
Strongly Disagree (1)	0	0	0	0	0	1	0	0	0	0	0



*B. Kalpana*  
**PRINCIPAL**  
 PRINCE SHRI VENKATESHWARA  
 ARTS AND SCIENCE COLLEGE  
 GOWRIVAKKAM, CHENNAI-600 073



**PRINCE SHRI VENKATESWARA ARTS AND SCIENCE COLLEGE**

Gowrivaldtam, Chennai-600073

Affiliated to University of Madras

**ALUMNI FEEDBACK ON CURRICULUM, INFRASTRUCTURE FACILITIES & AMBIENCE OF THE INSTITUTION – ANALYSIS REPORT**

**Academic Year** 2018-2019  
**Department** B.Sc.-Biotechnology  
**Number of Respondents** 40

Feedback Rate: Strongly Agree (5), Agree (4), Neutral (3), Disagree (2), Strongly Disagree (1)

S. No	Feedback on Curriculum, infrastructure facilities & ambience of the institution	5	4	3	2	1
1	Rate the appropriateness of curriculum and syllabus content for placement/ higher education. (Related to curriculum)	22	11	7	0	0
2	Rate the effectiveness of the academic curriculum for the development of analytical and problem-solving skills (Related to curriculum)	22	11	6	0	1
3	Rate the curriculum and institution activities for making the students industry ready at the end of the programme (Related to curriculum)	23	10	6	1	0
4	Rate the curriculum for the improvement of creative thinking skills and knowledge / scope of the syllabus in enhancing entrepreneurship skills/ lifelong learning/ human values and ethics. (Related to Academic Performance)	23	9	8	0	0
5	Rate the faculty and the teaching learning process in the department and institution (Related to curriculum and academic performance)	26	7	7	0	0



**PRINCE SHRI VENKATESWARA ARTS AND SCIENCE COLLEGE**

Gowrivaikam, Chennai-600073.  
Affiliated to University of Madras

6	Rate the placement opportunities and career guidance programs provided by the Placement Cell (Related to academic performance)	22	12	6	0	0
7	Rate the laboratory facilities and the laboratory course experiments relevancy to real time applications (Related to infrastructure and ambience of the institution)	22	12	6	0	0
8	Rate the adequacy of library and research Centre facilities (Related to infrastructure of the institution)	22	11	7	0	0
9	Rate the sports and cultural facilities and the related activities by the institution (Related to infrastructure and ambience of the institution)	20	11	9	0	0
10	Rate the opportunities provided by the institute to participate in co-curricular and extracurricular activities (Related to ambience of the institution)	25	7	6	1	1
11	Rate the conducive and peaceful overall environment provided by the institution (Related to ambience of the institution)	22	12	6	0	0



*B. Kalpana*  
**PRINCIPAL**  
PRINCE SHRI VENKATESHWARA  
ARTS AND SCIENCE COLLEGE  
GOWRIVAKKAM, CHENNAI-600 073





**PRINCE SHRI VENKATESWARA ARTS AND SCIENCE COLLEGE**

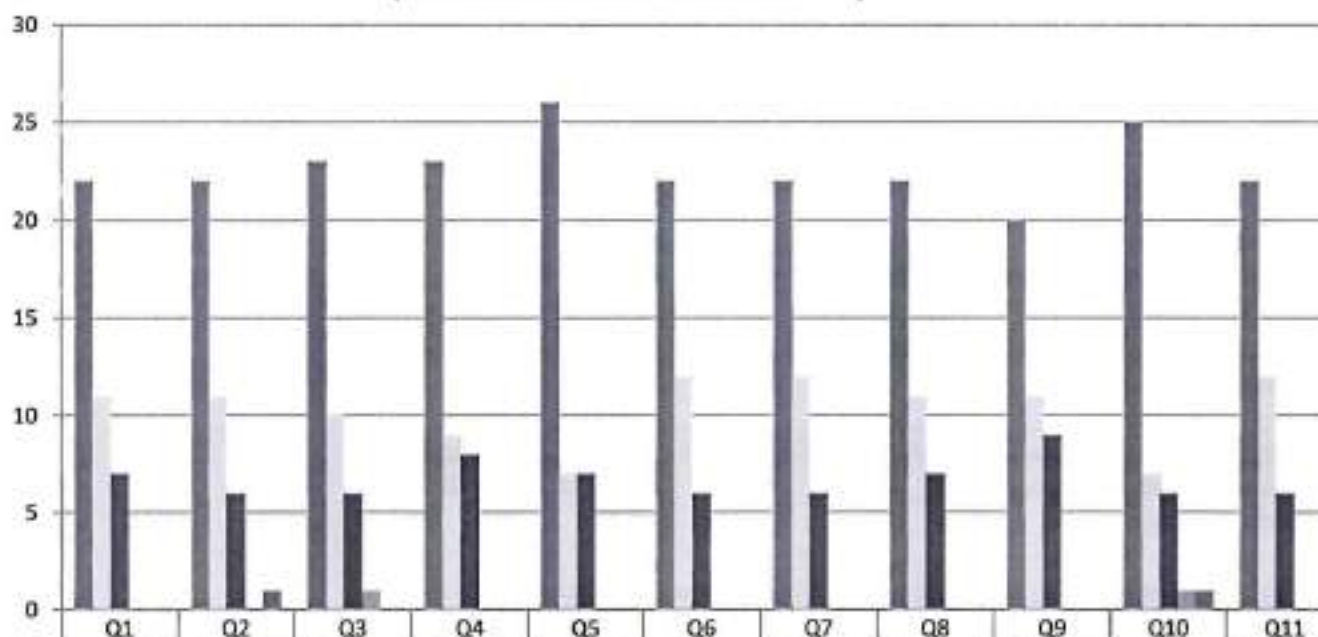
Gowrivakkam, Chennai-600073.

Affiliated to University of Madras

**ALUMNI FEEDBACK ON CURRICULUM, INFRASTRUCTURE  
FACILITIES & AMBIENCE OF THE INSTITUTION - 2018-2019**

**B.Sc. BIOTECHNOLOGY**

(NUMBER OF RESPONDENTS - 40)



Strongly Agree (5)	22	22	23	23	26	22	22	22	20	25	22
Agree (4)	11	11	10	9	7	12	12	11	11	7	12
Neutral (3)	7	6	6	8	7	6	6	7	9	6	6
Disagree (2)	0	0	1	0	0	0	0	0	0	1	0
Strongly Disagree (1)	0	1	0	0	0	0	0	0	0	1	0



*B. Kalpana*  
**PRINCIPAL**

PRINCE SHRI VENKATESWARA  
ARTS AND SCIENCE COLLEGE  
GOWRIVAKKAM, CHENNAI-600 07



**PRINCE SHRI VENKATESWARA ARTS AND SCIENCE COLLEGE**

Gowrivakkam, Chennai-600073.

Affiliated to University of Madras

**ALUMNI FEEDBACK ON CURRICULUM, INFRASTRUCTURE FACILITIES & AMBIENCE OF THE  
INSTITUTION – ANALYSIS REPORT**

**Academic Year** 2018-2019  
**Department** M.Sc. Microbiology  
**Number of Respondents** 9

Feedback Rate: Strongly Agree (5), Agree (4), Neutral (3), Disagree (2), Strongly Disagree (1)

S. No	Feedback on Curriculum, infrastructure facilities & ambience of the institution	5	4	3	2	1
1	Rate the appropriateness of curriculum and syllabus content for placement/ higher education. (Related to curriculum)	7	1	0	1	0
2	Rate the effectiveness of the academic curriculum for the development of analytical and problem-solving skills (Related to curriculum)	6	3	0	0	0
3	Rate the curriculum and institution activities for making the students industry ready at the end of the programme (Related to curriculum)	4	3	2	0	0
4	Rate the curriculum for the improvement of creative thinking skills and knowledge / scope of the syllabus in enhancing entrepreneurship skills/ lifelong learning/ human values and ethics. (Related to Academic Performance)	8	1	0	0	0
5	Rate the faculty and the teaching learning process in the department and institution (Related to curriculum and academic performance)	8	0	1	0	0
6	Rate the placement opportunities and career guidance programs provided by the Placement Cell (Related to academic performance)	3	4	2	0	0



**PRINCE SHRI VENKATESWARA ARTS AND SCIENCE COLLEGE**

Gowrivakkam, Chennai-600073

Affiliated to University of Madras

7	Rate the laboratory facilities and the laboratory course experiments relevancy to real time applications (Related to infrastructure and ambience of the institution)	6	2	1	0	0
8	Rate the adequacy of library and research Centre facilities (Related to infrastructure of the institution)	9	0	0	0	0
9	Rate the sports and cultural facilities and the related activities by the institution (Related to infrastructure and ambience of the institution)	7	2	0	0	0
10	Rate the opportunities provided by the institute to participate in co-curricular and extracurricular activities (Related to ambience of the institution)	7	1	1	0	0
11	Rate the conducive and peaceful overall environment provided by the institution (Related to ambience of the institution)	6	3	0	0	0



*B. Kalpana*  
**PRINCIPAL**  
PRINCE SHRI VENKATESHWARA  
ARTS AND SCIENCE COLLEGE  
GOWRIVAKKAM, CHENNAI-600 073





**PRINCE SHRI VENKATESWARA ARTS AND SCIENCE COLLEGE**

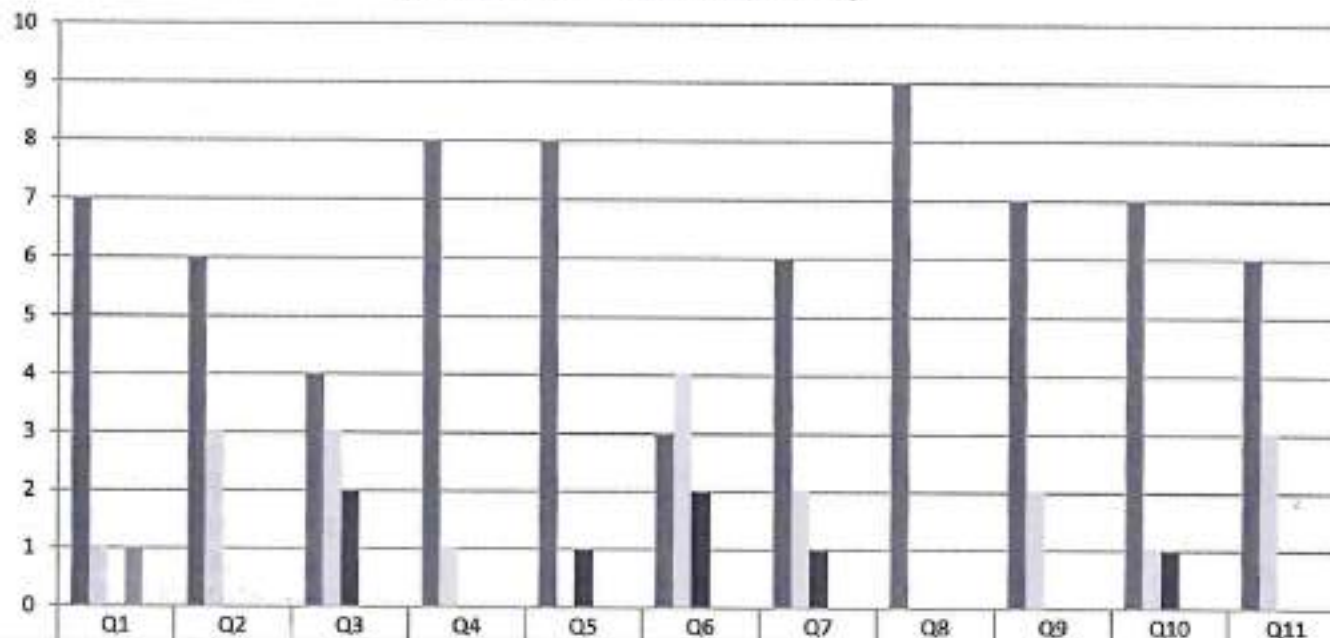
Gowrivakkam, Chennai-600073.

Affiliated to University of Madras

**ALUMNI FEEDBACK ON CURRICULUM, INFRASTRUCTURE  
FACILITIES & AMBIENCE OF THE INSTITUTION - 2018-2019**

**M.Sc. MICROBIOLOGY**

(NUMBER OF RESPONDENTS - 9)



	Q1	Q2	Q3	Q4	Q5	Q6	Q7	Q8	Q9	Q10	Q11
Strongly Agree (5)	7	6	4	8	8	3	6	9	7	7	6
Agree (4)	1	3	3	1	0	4	2	0	2	1	3
Neutral (3)	0	0	2	0	1	2	1	0	0	1	0
Disagree (2)	1	0	0	0	0	0	0	0	0	0	0
Strongly Disagree (1)	0	0	0	0	0	0	0	0	0	0	0



*B. Kalpana*  
**PRINCIPAL**  
PRINCE SHRI VENKATESHWARA  
ARTS AND SCIENCE COLLEGE  
GOWRIVAKKAM, CHENNAI-600 073.



**PRINCE SHRI VENKATESWARA ARTS AND SCIENCE COLLEGE**

Gowrivakkam, Chennai-600073

Affiliated to University of Madras

**ALUMNI FEEDBACK ON CURRICULUM, INFRASTRUCTURE FACILITIES & AMBIENCE OF THE INSTITUTION – ANALYSIS REPORT**

**Academic Year** 2018-2019  
**Department** M.Sc. Computer Science  
**Number of Respondents** 10

Feedback Rate: Strongly Agree (5), Agree (4), Neutral (3), Disagree (2), Strongly Disagree (1)

S. No	Feedback on Curriculum, infrastructure facilities & ambience of the institution	5	4	3	2	1
1	Rate the appropriateness of curriculum and syllabus content for placement/ higher education. (Related to curriculum)	7	1	1	1	0
2	Rate the effectiveness of the academic curriculum for the development of analytical and problem-solving skills (Related to curriculum)	6	3	1	0	0
3	Rate the curriculum and institution activities for making the students industry ready at the end of the programme (Related to curriculum)	4	4	2	0	0
4	Rate the curriculum for the improvement of creative thinking skills and knowledge / scope of the syllabus in enhancing entrepreneurship skills/ lifelong learning/ human values and ethics. (Related to Academic Performance)	8	2	0	0	0
5	Rate the faculty and the teaching learning process in the department and institution (Related to curriculum and academic performance)	7	1	2	0	0



**PRINCE SHRI VENKATESWARA ARTS AND SCIENCE COLLEGE**

Gowrivakkam, Chennai-600073.

Affiliated to University of Madras

6	Rate the placement opportunities and career guidance programs provided by the Placement Cell (Related to academic performance)	3	4	3	0	0
7	Rate the laboratory facilities and the laboratory course experiments relevancy to real time applications (Related to infrastructure and ambience of the institution)	6	2	2	0	0
8	Rate the adequacy of library and research Centre facilities (Related to infrastructure of the institution)	8	1	1	0	0
9	Rate the sports and cultural facilities and the related activities by the institution (Related to infrastructure and ambience of the institution)	7	2	1	0	0
10	Rate the opportunities provided by the institute to participate in co-curricular and extracurricular activities (Related to ambience of the institution)	7	1	2	0	0
11	Rate the conducive and peaceful overall environment provided by the institution (Related to ambience of the institution)	6	3	1	0	0



*B. Kalpana*

**PRINCIPAL**

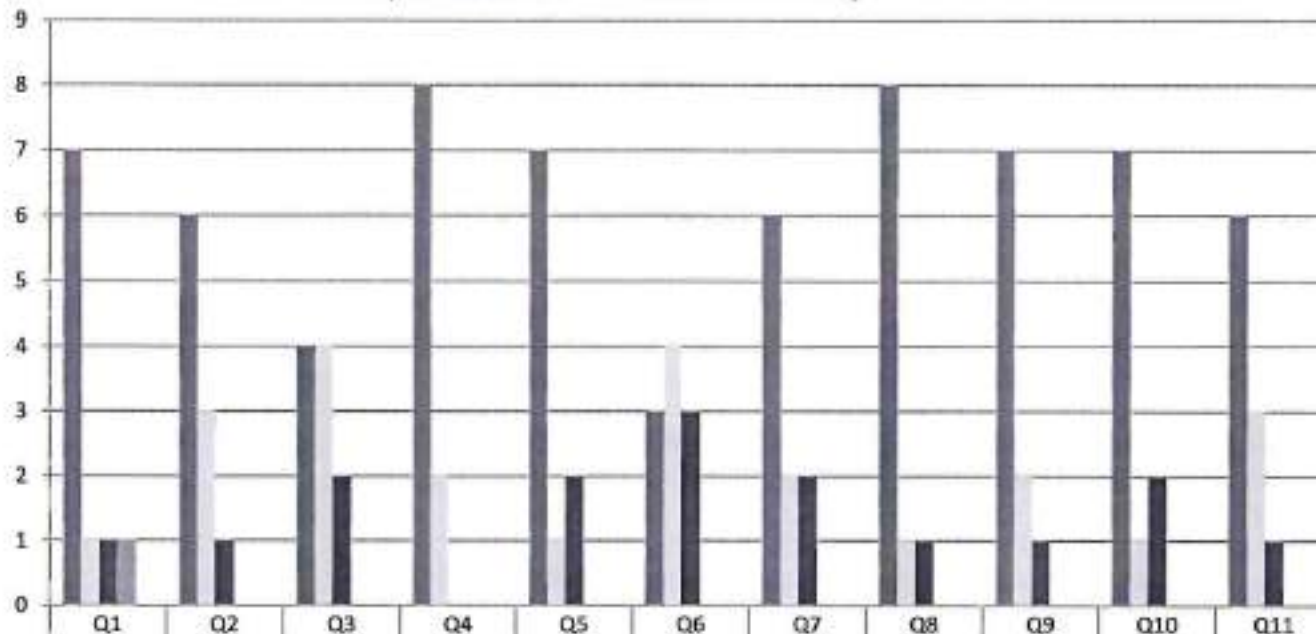
**PRINCE SHRI VENKATESHWARA  
ARTS AND SCIENCE COLLEGE  
GOWRIVAKKAM, CHENNAI-600 073.**





**PRINCE SHRI VENKATESWARA ARTS AND SCIENCE COLLEGE**  
 Gowrivaidyam, Chennai-600073.  
 Affiliated to University of Madras

**ALUMNI FEEDBACK ON CURRICULUM, INFRASTRUCTURE  
 FACILITIES & AMBIENCE OF THE INSTITUTION - 2018-2019**  
**M.Sc. COMPUTER SCIENCE**  
 (NUMBER OF RESPONDENTS - 10)



	Q1	Q2	Q3	Q4	Q5	Q6	Q7	Q8	Q9	Q10	Q11
Strongly Agree (5)	7	6	4	8	7	3	6	8	7	7	6
Agree (4)	1	3	4	2	1	4	2	1	2	1	3
Neutral (3)	1	1	2	0	2	3	2	1	1	2	1
Disagree (2)	1	0	0	0	0	0	0	0	0	0	0
Strongly Disagree (1)	0	0	0	0	0	0	0	0	0	0	0



*B. Kalpana*  
**PRINCIPAL**



**PRINCE SHRI VENKATESWARA ARTS AND SCIENCE COLLEGE**

Gowrivakkam, Chennai-600073.

Affiliated to University of Madras

**ALUMNI FEEDBACK ON CURRICULUM, INFRASTRUCTURE FACILITIES & AMBIENCE OF THE INSTITUTION – ANALYSIS REPORT**

**Academic Year** 2018-2019  
**Department** M.Sc. Biochemistry  
**Number of Respondents** 8

Feedback Rate: Strongly Agree (5), Agree (4), Neutral (3), Disagree (2), Strongly Disagree (1)

S. No	Feedback on Curriculum, infrastructure facilities & ambience of the institution	5	4	3	2	1
1	Rate the appropriateness of curriculum and syllabus content for placement/ higher education. (Related to curriculum)	4	4	0	0	0
2	Rate the effectiveness of the academic curriculum for the development of analytical and problem-solving skills (Related to curriculum)	5	3	0	0	0
3	Rate the curriculum and institution activities for making the students industry ready at the end of the programme (Related to curriculum)	5	3	0	0	0
4	Rate the curriculum for the improvement of creative thinking skills and knowledge / scope of the syllabus in enhancing entrepreneurship skills/ lifelong learning/ human values and ethics. (Related to Academic Performance)	5	2	1	0	0
5	Rate the faculty and the teaching learning process in the department and institution (Related to curriculum and academic performance)	5	3	0	0	0
6	Rate the placement opportunities and career guidance programs provided by the Placement Cell (Related to academic performance)	5	2	1	0	0



**PRINCE SHRI VENKATESWARA ARTS AND SCIENCE COLLEGE**

Gowrivakkam, Chennai-600073.

Affiliated to University of Madras

7	Rate the laboratory facilities and the laboratory course experiments relevancy to real time applications (Related to infrastructure and ambience of the institution)	6	2	0	0	0
8	Rate the adequacy of library and research Centre facilities (Related to infrastructure of the institution)	6	2	0	0	0
9	Rate the sports and cultural facilities and the related activities by the institution (Related to infrastructure and ambience of the institution)	4	4	0	0	0
10	Rate the opportunities provided by the institute to participate in co-curricular and extracurricular activities (Related to ambience of the institution)	5	3	0	0	0
11	Rate the conducive and peaceful overall environment provided by the institution (Related to ambience of the institution)	4	3	1	0	0



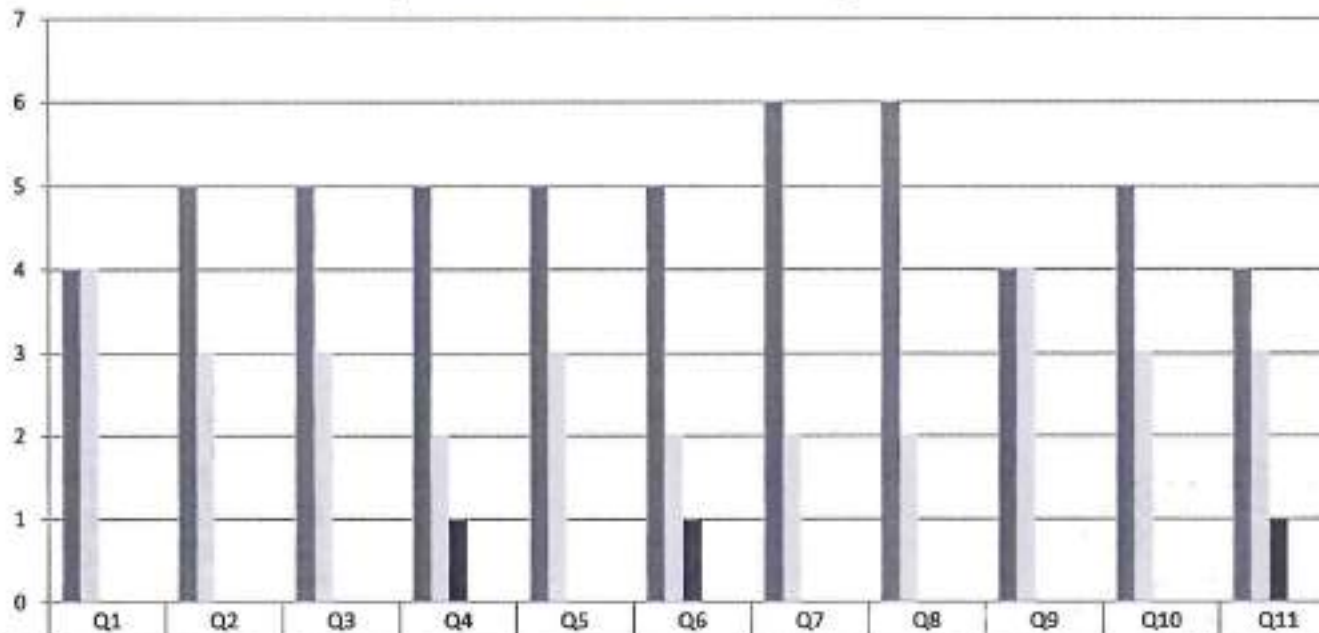
*B. Kalpana*  
**PRINCIPAL**  
PRINCE SHRI VENKATESHWARA  
ARTS AND SCIENCE COLLEGE  
GOWRIVAKKAM, CHENNAI-600 073.





**PRINCE SHRI VENKATESWARA ARTS AND SCIENCE COLLEGE**  
Gowrivaikam, Chennai-600073  
Affiliated to University of Madras

**ALUMNI FEEDBACK ON CURRICULUM, INFRASTRUCTURE  
FACILITIES & AMBIENCE OF THE INSTITUTION - 2018-2019**  
**M.Sc. BIOCHEMISTRY**  
(NUMBER OF RESPONDENTS - 8)



	Q1	Q2	Q3	Q4	Q5	Q6	Q7	Q8	Q9	Q10	Q11
Strongly Agree (5)	4	5	5	5	5	5	6	6	4	5	4
Agree (4)	4	3	3	2	3	2	2	2	4	3	3
Neutral (3)	0	0	0	1	0	1	0	0	0	0	1
Disagree (2)	0	0	0	0	0	0	0	0	0	0	0
Strongly Disagree (1)	0	0	0	0	0	0	0	0	0	0	0



*B. Kalpana*  
**PRINCIPAL**  
PRINCE SHRI VENKATESHWARA  
ARTS AND SCIENCE COLLEGE  
GOWRIVAKKAM, CHENNAI-600 073.



**PRINCE SHRI VENKATESWARA ARTS AND SCIENCE COLLEGE**

Gowrivaklam, Chennai-600073.

Affiliated to University of Madras

**ALUMNI FEEDBACK ON CURRICULUM, INFRASTRUCTURE FACILITIES & AMBIENCE OF THE INSTITUTION – ANALYSIS REPORT**

**Academic Year** 2018-2019  
**Department** M.Sc. Biotechnology  
**Number of Respondents** 10

Feedback Rate: Strongly Agree (5), Agree (4), Neutral (3), Disagree (2), Strongly Disagree (1)

S. No	Feedback on Curriculum, infrastructure facilities & ambience of the institution	5	4	3	2	1
1	Rate the appropriateness of curriculum and syllabus content for placement/ higher education. (Related to curriculum)	6	3	0	1	0
2	Rate the effectiveness of the academic curriculum for the development of analytical and problem-solving skills (Related to curriculum)	6	3	1	0	0
3	Rate the curriculum and institution activities for making the students industry ready at the end of the programme (Related to curriculum)	7	2	1	0	0
4	Rate the curriculum for the improvement of creative thinking skills and knowledge / scope of the syllabus in enhancing entrepreneurship skills/ lifelong learning/ human values and ethics. (Related to Academic Performance)	8	2	0	0	0
5	Rate the faculty and the teaching learning process in the department and institution (Related to curriculum and academic performance)	9	1	0	0	0
6	Rate the placement opportunities and career guidance programs provided by the Placement Cell (Related to academic performance)	8	1	0	1	0



**PRINCE SHRI VENKATESWARA ARTS AND SCIENCE COLLEGE**

Gowrivakkam, Chennai-600073.

Affiliated to University of Madras

7	Rate the laboratory facilities and the laboratory course experiments relevancy to real time applications (Related to infrastructure and ambience of the institution)	7	3	0	0	0
8	Rate the adequacy of library and research Centre facilities (Related to infrastructure of the institution)	6	4	0	0	0
9	Rate the sports and cultural facilities and the related activities by the institution (Related to infrastructure and ambience of the institution)	7	2	1	0	0
10	Rate the opportunities provided by the institute to participate in co-curricular and extracurricular activities (Related to ambience of the institution)	7	1	1	1	0
11	Rate the conducive and peaceful overall environment provided by the institution (Related to ambience of the institution)	6	3	1	0	0



*B. Kalpana*  
**PRINCIPAL**  
PRINCE SHRI VENKATESHWARA  
ARTS AND SCIENCE COLLEGE  
GOWRIVAKKAM, CHENNAI-600 073.





**PRINCE SHRI VENKATESWARA ARTS AND SCIENCE COLLEGE**

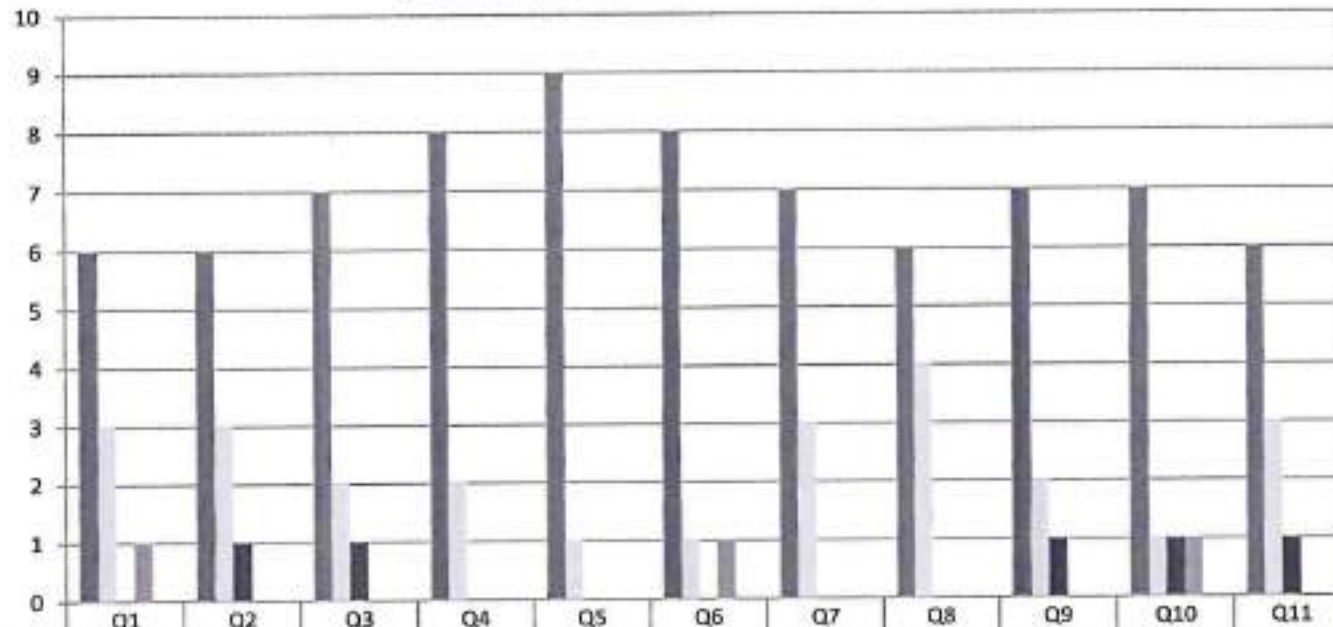
Gowrivakkam, Chennai-600073.

Affiliated to University of Madras

**ALUMNI FEEDBACK ON CURRICULUM, INFRASTRUCTURE  
FACILITIES & AMBIENCE OF THE INSTITUTION - 2018-2019**

**M.Sc. BIOTECHNOLOGY**

(NUMBER OF RESPONDENTS - 10)



*B. Kalpana*  
**PRINCIPAL**  
PRINCE SHRI VENKATESHWARA  
ARTS AND SCIENCE COLLEGE  
GOWRIVAKKAM, CHENNAI-600 073